

# MEET THE PRODUCT

## Dream Luxe Sleeping Mask

Hydrate, Refine and Renew with an overnight facial that delivers glowing results by morning.



Proprietary  
Formulation



Patented  
Technology



Patented  
Ingredients



Cruelty Free



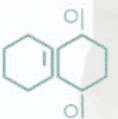
Gluten Free



Vegan



Phthalate  
Free



Paraben  
Free

# Hydrate, Refine, & Renew

## Overnight facial. Wake up glowing.

---

Transform your skin while you sleep. This luxurious overnight mask hydrates refines texture and renews with powerhouse ingredients like Hyaluronic Acid and Bakuchiol. After just one night, you'll wake up to a radiant glow, smooth skin, and long-lasting moisture.

- **Hydrating:** Deeply replenishes moisture, plumping skin overnight for a soft, smooth, and refreshed look.
- **Refining:** Smooths texture, tightens pores, and enhances clarity.
- **Renewing:** Boosts cell turnover, reducing fine lines and restoring youthful radiance.
- **Brightening:** Evens tone, reducing dullness for a vibrant, glowing complexion.
- **Soothing:** Calms redness and irritation, promoting a balanced, refreshed appearance.
- **Protecting:** Defends against environmental stressors to maintain healthy, resilient skin.

### PRICING:

Retail :\$78

Subscribe & Save: \$70.20

Brand Partner: \$58.50

Subscribe & Save: Get FREE shipping on \$50 orders, save 10% on everything plus get 15% back in shopping credits every time your subscription is replenished!

# MEET THE PRODUCT

## Dream Luxe Sleeping Mask

MADE IN U.S.A.  
1.7 oz

### Skin loving ingredients:



**Bakuchiol:** A natural alternative to retinol that targets fine lines, wrinkles, and signs of aging without irritation.



**Inflacin®:** A patented powerhouse molecule that tackles inflammation, a root cause of premature aging, curbing harmful effects, reducing free radicals, and promoting radiant, youthful skin.



**Soluxomes®:** A patented delivery system works like a luxury concierge for your skin—ensuring active ingredients dive deep, target precisely where needed, and stay longer for radiant, lasting results.



**Lentil Extract:** Enhances skin texture, reduces the appearance of fine lines, tightens pores, and boosts hydration for a smoother, more balanced complexion.



**Pyrus Malus (Apple) Fruit Extract:** Packed with AHAs, antioxidants, and vitamins, it hydrates, brightens skin, reduces wrinkles, evens tone, provides antioxidant protection, and controls excess oil.



**Wine Extract:** A powerful antioxidant blend rich in polyphenols, including resveratrol, to fight free radicals, boost collagen, and promote youthful, glowing skin.



**Vitamin C + Watermelon Complex:** Boosts collagen, brightens skin, and provides antioxidant protection while minimizing wrinkles, fine lines, and age spots for a smooth, youthful glow.



# MEET THE PRODUCT

## Dream Luxe Sleeping Mask

MADE IN U.S.A.  
1.7 oz

### Skin loving ingredients:



**Vitamin E:** Antioxidant-rich, omega-packed, vitamin-loaded. It fights free radicals, boosts collagen, and hydrates deeply.



**Hyaluronic Acid:** Intensely hydrates, plumps, and improves skin's resilience for a more youthful complexion.



**Niacinamide (Vitamin B3):** Helps to improve skin texture, minimize pores, and enhance the skin's natural barrier function.



**Soothing Complex:** Calms and soothes skin, reducing redness and irritation, while antioxidants protect against environmental damage and promote a youthful glow.

WATER, GLYCERIN, DIMETHICONE, SODIUM HYALURONATE CROSSPOLYMER, POLYGLYCERIN-10 PENTAISOSTEARATE, POLYMETHYLSILSESQUIOXANE, AMMONIUM ACRYLOYLDIMETHYLAURATE/VP COPOLYMER, POLYSILICONE-11, BUTYLENE GLYCOL, BAKUCHIOL, WINE EXTRACT, SACCHAROMYCES CEREVISIAE EXTRACT, CITRULLUS LANATUS (WATERMELON) FRUIT EXTRACT, LENS ESCULENTA (LENTIL) FRUIT EXTRACT, PYRUS MALUS (APPLE) FRUIT EXTRACT, CAMELLIA SINENSIS (WHITE TEA) LEAF EXTRACT, CAMELLIA SINENSIS (GREEN TEA) LEAF EXTRACT, POLYGONUM CUSPIDATUM ROOT EXTRACT, CHAMOMILLA RECUTITA (MATRICARIA) FLOWER EXTRACT, NIACINAMIDE, CALCIUM PANTOTHENATE, SODIUM ASCORBYL PHOSPHATE, TOCOPHERYL ACETATE, PYRIDOXINE HCL, SODIUM LACTATE, SODIUM PCA, PEG-12 GLYCERYL DIMYRISTATE, PEG-23 GLYCERYL DISTEARATE, MALTODEXTRIN, SILICA, POLYSORBATE 40, SODIUM STARCH OCTENYLSUCCINATE, FRAGRANCE, DISODIUM EDTA, POTASSIUM SORBATE, SODIUM BENZOATE, PHENOXYETHANOL, CAPRYLYL GLYCOL, ETHYLHEXYLGLYCERIN, HEXYLENE GLYCOL.

## HOW TO USE:

For optimal results, use 2-3 times per week to maintain consistent hydration, refinement, and renewal.

---



After cleansing and applying your serum or booster, gently smooth an even layer across your face, allowing it to absorb fully. Use it in place of your regular moisturizer. Let the mask work overnight, infusing active ingredients while your skin is most receptive. In the morning, rinse thoroughly to reveal refreshed, hydrated skin.

### **Pro Tip:**

For the ultimate overnight pampering, blend a few drops of Baobab Facial Oil with the mask before application. This boosts moisture, enhances skin barrier repair, and delivers a deeper, more restorative treatment.

- **Sun Protection:** To protect your skin from sun sensitivity, use a daily sunscreen with SPF 30 or higher, such as BELLAME Luxe Soleil SPF 50.
  - **Eye Contact:** Avoid contact with the eyes. If contact occurs, rinse thoroughly with water.
-