

# MEET THE PRODUCT

## Acqua Lash Mascara

Luxurious, water-resistant mascara infused with botanicals for lasting length, volume, and strength.



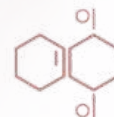
Proprietary  
Formulation



Cruelty Free



Vegan



Paraben Free



Phthalate Free

# Lift, Refine, & Nourish

Volume, length, & nourishment all in one sweep.

---

Transform your lash game with a luxurious, high-performance mascara that merges nature and technology. Infused with botanicals like Baobab Oil and Carnauba Wax, this water-resistant formula delivers intense length and volume that lasts. Smudge-proof and conditioning, it brings a professional touch to every lash.

**Long-lasting Wear:** Smudge-proof, flake-free performance for all-day perfection.

**Water-Resistant Hold:** Resists humidity and light water exposure.

**Botanical Nourishment:** Powered by nature to strengthen and condition lashes.

**Soft Volume:** Plant waxes give natural fullness without clumping.

**Precise Definition:** Acacia gum lifts and separates for ultimate impact.

**Easy Removal:** Gentle removal with warm water or makeup remover.

## PRICING:

Retail : \$27

Subscribe & Save: \$24.30

Brand Partner: \$20.35

Subscribe & Save: Get FREE shipping on \$50 orders, save 10% on everything plus get 15% back in shopping credits every time your subscription is replenished!

# MEET THE PRODUCT

## Acqua Lash Mascara

MADE IN ITALY  
10 g

### Skin loving ingredients:



**Baobab Seed Oil:** Packed with antioxidants and vitamins, this oil nourishes, strengthens, and moisturizes lashes, enhancing softness and flexibility.



**Helianthus Annuus (Sunflower) Seed Wax:** Adds natural volume with nourishing vitamins and antioxidants, promoting softer, healthier lashes with a lasting lift.



**Copernicia Cerifera (Carnauba) Wax:** Provides water-resistant hold, setting lashes with a durable layer that enhances curl, volume, and all-day wear.



**Acacia Senegal Gum:** Lengthens and separates lashes with a flexible hold, creating a lifted look that resists clumping and maintains definition.



**Rhus Verniciflua Peel Wax:** Adds smoothness and shine, giving lashes a polished, fresh look while enhancing flexibility and water resistance.

# HOW TO USE:

---



- Apply the mascara from root to tip, using a gentle wiggling motion to enhance volume and separation.
- Let it set for a water-resistant finish. For extra drama, layer a second coat.

**PRO TIP:** For a lifted look, curl your lashes with an eyelash curler or apply your first coat of mascara. Gently press your lashes upward with your fingertip while it's still setting. Let it dry, then add a second coat for extra drama and volume.

AQUA / WATER, COPERNICIA CERIFERA CERA / COPERNICIA CERIFERA (CARNAUBA) WAX, GLYCERYL STEARATE, STEARYL STEARATE, ACRYLATES/ETHYLHEXYL ACRYLATE COPOLYMER, STEARIC ACID, PALMITIC ACID, ACACIA SENEGAL GUM, HELIANTHUS ANNUUS SEED CERA / HELIANTHUS ANNUUS (SUNFLOWER) SEED WAX, AMINOMETHYL PROPANOL, RHUS VERNICIFLUA PEEL CERA / RHUS VERNICIFLUA PEEL WAX, PEG-15 GLYCERYL STEARATE, PHENOXYETHANOL, HYDROXYETHYLCELLULOSE, CAPRYLYL GLYCOL, SODIUM DEHYDROACETATE, MYRISTIC ACID, LAURETH-21, ADANSONIA DIGITATA SEED OIL, LAURIC ACID, OLEIC ACID, DISODIUM PHOSPHATE, POLYSORBATE 60, SODIUM PHOSPHATE

---